



**High-performance digital tool for live broadcast and training illustration**



**Make your live video presentations and commentaries colorful and eye-catching!**

“Lookie-Loo” from *The Ellen Degeneres Show*, the CODI Strator is a state-of-the-art, 1RU digital sketchpad solution that provides easy-to-use illustration tools for instant interaction with an incoming digital video source. Featuring SDI quality and unlimited animations, CODI Strator can fit in most remote environments. Using the touch of a finger, click of a mouse, or the point of a light pen over live or still video, the user can illustrate, highlight, and bring details into focus. Sophisticated flipbook animations can easily be imported as Targa sequences and assigned as stickers, cursors, and more.

**Big League Features in a Small Package**

CODI Strator integrates seamlessly with any broadcast or VGA touch screen monitors using ELO Touch Controllers. A Wacom® digitizing tablet comes equipped with either a light pen or a mouse. Either method allows the graphic-rich, animated illustration to be simultaneously displayed on both the VGA (broadcast) monitor as well as the air channel. The intuitive toolbar menu automatically prioritizes and dynamically positions the sets of tools in use. Various groups of graphic elements and tools give the user a large selection of choices for bringing focal elements across to their audience. For example:

- User edited, point-to-point line segments with arrowheads provide instant detail to specific areas
- Freehand brushes with user-editable sizes, transparencies and colors can mark the area of a specific location
- Virtually unlimited animated logos can be positioned over live video and over graphic backgrounds of a user-adjustable transparency.

**Features**

- **Unlimited user-resizable flipbook animations**
- **Unlimited user-editable line drawings**
- **Unlimited user-resizable logos, bullets, stickers and backgrounds**
- **Dedicated ‘Overlay’ output displays touch-screen controls**
- **User defined GUI**
- **Spotlight function**
- **Easy point-to-point line drawing**
- **Easy positioning of icons such as arrows, bugs and stickers**
- **UnDo-ReDo**
- **Resizing tools with user-defined presets**

# CODI Strator

## Live, Animated Digital Telestration

### Virtually Unlimited Applications:

- Editable, resizable animated bullets with numeric increments help a sportscaster or a news anchorman identify the elements of the action in a specific order of occurrence.
- Large number of animated or static logos, icons and "stickers" can be rapidly "walked over" the live video and/or pasted while on-line over semi-transparent or solid backgrounds
- "Spotlight" is user editable and highlights a specific area of detail. The spotlight can also be walked over the live video to follow a point of action.
- Animated or static logos can be turned into "cursors" and can be moved freely anywhere over a live video image

### Technical Specifications

#### Digital Inputs/Outputs

|                   |                                   |
|-------------------|-----------------------------------|
| Number of Inputs  | 1 SDI Video*, 1 SDI Key           |
| Number of Outputs | 1 SDI Video, 1 SDI Key            |
| Type              | BNC                               |
| Impedance         | Input = 75 ohms; Output = 75 ohms |
| Data Format       | SMPTE 259M-C 10-bit 270 Mb/s      |

\* Serves as digital Gen/Lock when no analog Gen/Lock input

#### Analog input

|           |                                     |
|-----------|-------------------------------------|
| Type      | 1 Gen/Lock                          |
| Impedance | BNC                                 |
| Format    | 75 ohms                             |
|           | 1 volt p-p composite video, 525/625 |

#### Analog output

|           |                                 |
|-----------|---------------------------------|
| Type      | 1 Monitoring Video              |
| Impedance | BNC, located on auxiliary panel |
| Format    | 75 ohms                         |
|           | NTSC/PAL, based on SDI output   |

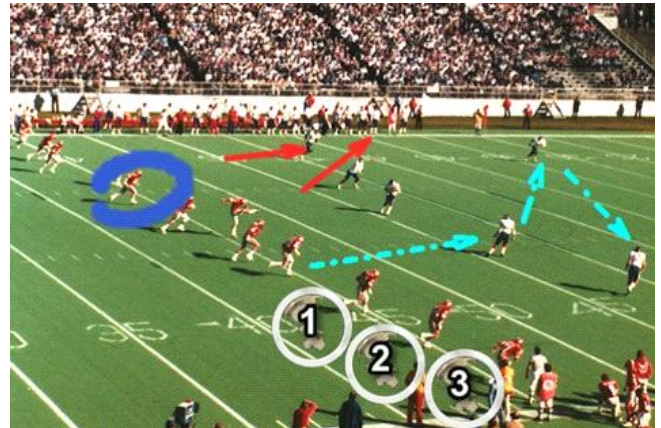
#### GPIO Connections

|           |                 |
|-----------|-----------------|
| Type      | 16              |
| Impedance | DB25            |
| Level     | 50 ohms         |
|           | TTL, level only |

#### Dimensions

|        |                                     |
|--------|-------------------------------------|
| Height | 1RU, 4.37cm/1.72" (with mid-mounts) |
| Width  | 48.3 cm/24"                         |
| Depth  | 61cm/24"                            |
| Weight | 12 lbs.                             |

UL recognized, FCC Class B compliant, CE Conformity



### CODI Strator provides illustration solutions for the following working environments

- Broadcast Studios: News, Weather, Sports, Traffic
- Corporate Broadcasting: Media Presentations, Press Conferences, Training and Board Meetings
- Remote Trucks: Sporting Events
- Hospital and Medical: Training and live broadcast of remote surgeries
- Colleges and High Schools: Classroom training

### Options

- Resistive Touch Screen Monitor (15 in. or 18 in.)

### System Configuration

- Microsoft® Windows® 2000 Professional Edition
- Intel® Pentium® 4, 2.4 Ghz, 512 K cache, 533 Mhz FSB
- 60 GB 7200 rpm ATA 133 hard drive
- One CD-RW Disc Drive
- 1 GB 266 Mhz DDR PC2100 Dimm CL2.5
- Dual-channel ultra DMA 100 IDE Controller
- Two on-board 10/100 MB/s Ethernet adapters
- One RS-232 serial port (9 pin D-shell type)
- Micro floppy drive, mouse and standard PC keyboard
- Hauppauge Video Capture Board to convert or capture 525/625 video and display on VGA output for previewing live. Works with Windows® 2000
- Works with all EloTouch compatible Touch Screen serial control lers
- Wacom® Tablet and Light Pen

[WWW.CHYRON.COM](http://WWW.CHYRON.COM)

|                     |                      |
|---------------------|----------------------|
| <b>USA</b>          | 631 845 2051         |
| <b>EAME</b>         | +44 (0) 118 921 4555 |
| <b>Asia/Pacific</b> | +905.527.2208        |